

INTERCHANGEABLE HEAD PRESET DIGITAL “CLICK” TORQUE WRENCHES (WIFI LAN)

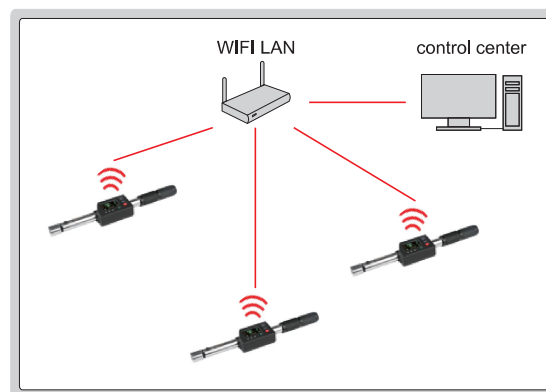
DATA OUTPUT

INSPECTION CERTIFICATE



Torque wrench:

- Clockwise and counter-clockwise operation
- Unit: N.m, cN.m, lb.in, lb.ft, kg.cm, kg.m, oz.in
- Peak and first peak working modes
- Maintain the click audible alarm feature of mechanical wrench
- Mechanical structure adjusts torque value, digital sensor displays real torque value, wrench can be used without torque tester
- Set the angle range to strictly monitor angle of the screw from fitting surface to tightening
- Interval display of curved interface and main interface after unloading, upper and lower tolerance limits can be set to determine pass or fail by LED lights
- Provide torque graph for analyzing and adjusting the tightening strategy
- Scanning module and scanning windows to match corresponding screws
- Open communication protocols for users to develop and interface with factory MES, PLC and other systems
- Automatic zeroing during continuous operation
- Memory of 1000 results and 100 historical review curves
- Auto power off time can be set
- 2 high capacity rechargeable lithium batteries for alternate use



Settings

Torque unit: **Nm** Torque range: 21.6-23.4

Set torque: **22.5**

±Err%: **4**

Set angle (°): **10** Angle range (°): 1-19

±Error (°): **9**

Data upload methods: ☒ Sequential upload ☐ Qualified upload

Set direction: ☒ CW/CW ☐ CW ☐ CCW

Judge mode: ☐ Peak ☒ F Peak

Standby time: **60**

Read **Update**

parameter setting software (included)

Electronic Torque Wrench Control Panel

Server IP: 172.20.10.4 Port: 8899

Connected Unconnected No Wrench

Storage Path: 1

1 S/N: AF000017 IP: 172.20.10.2:598

Torque: 21.6 - 23.4 22.63 Unit: Nm

Angle: 1.0 - 19.0 1.620

Unit: Nm

Def_A: 012345678905 Def_B: 16:35:10

5 S/N: IP:

Torque: - - - - -

Angle: - - - - -

Unit: - - - - -

Def_A: Def_B:

6 S/N: IP:

Torque: - - - - -

Angle: - - - - -

Unit: - - - - -

Def_A: Def_B:

9 S/N: IP:

Torque: - - - - -

Angle: - - - - -

Unit: - - - - -

Def_A: Def_B:

10 S/N: IP:

Torque: - - - - -

Angle: - - - - -

Unit: - - - - -

Def_A: Def_B:

12 S/N: IP:

Torque: - - - - -

Angle: - - - - -

Unit: - - - - -

Def_A: Def_B:

work display software (included)

Software:

- WIFI LAN real-time communication can receive and monitor 24 wrenches at the same time, data can be automatically sent to the centralized control center software
- Parameters can be set and matched directly to the wrench via USB connection to the software
- Can select whether the wrench only sends qualified data after operation (in accordance with the tolerance)
- The data is stored in the wrench when the wrench is disconnected, and the data is automatically uploaded to the computer after wireless connection, or can be uploaded manually through USB connection
- The data in the software is stored in a file with Txt and can be copied and exported to Excel

SPECIFICATION

Code	Range	Accuracy		Resolution	Socket size (A×B)	Square driver (D)	Standard effective length (L)	Length	Weight
		Torque	Angle						
IST-WPE10	2~10N.m	±3%	±1% of indicated value + ±1° (speed 10°~180°/s) + ±1° (clamping error)	0.001N.m	12×9mm	1/4"	210mm	234mm	520g
IST-WPE20	4~20N.m			0.01N.m	12×9mm	1/4"	225mm	249mm	550g
IST-WPE30	6~30N.m			0.01N.m	12×9mm	1/4"	225mm	249mm	550g
IST-WPE60	10~60N.m			0.01N.m	12×9mm	3/8"	280mm	318mm	880g
IST-WPE100	20~100N.m			0.01N.m	12×9mm	3/8"	324mm	363mm	1000g
IST-WPE200	40~200N.m			0.1N.m	18×14mm	1/2"	453mm	485mm	1340g
IST-WPE300	60~300N.m			0.1N.m	18×14mm	1/2"	588mm	620mm	1700g
IST-WPE400	80~400N.m			0.1N.m	18×14mm	3/4"	668mm	700mm	1850g



OPEN END HEAD (optional)

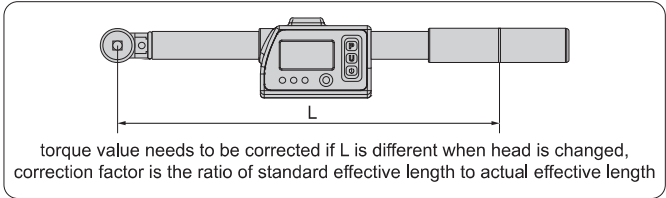
Code	Open size	Applicable wrenches	Code	Open size	Applicable wrenches
IST-11WM-K6	6mm	IST-WPE10 IST-WPE20 IST-WPE30 IST-WPE60 IST-WPE100	IST-11WM-K13A	13mm	IST-WPE200 IST-WPE300 IST-WPE400
IST-11WM-K7	7mm		IST-11WM-K14A	14mm	
IST-11WM-K8	8mm		IST-11WM-K15A	15mm	
IST-11WM-K9	9mm		IST-11WM-K16A	16mm	
IST-11WM-K10	10mm		IST-11WM-K17A	17mm	
IST-11WM-K11	11mm		IST-11WM-K18A	18mm	
IST-11WM-K12	12mm		IST-11WM-K19A	19mm	
IST-11WM-K13	13mm		IST-11WM-K20A	20mm	
IST-11WM-K14	14mm		IST-11WM-K21A	21mm	
IST-11WM-K15	15mm		IST-11WM-K22A	22mm	
IST-11WM-K16	16mm		IST-11WM-K23A	23mm	
IST-11WM-K17	17mm		IST-11WM-K24A	24mm	
IST-11WM-K18*	18mm		IST-11WM-K27A*	27mm	
IST-11WM-K19*	19mm		IST-11WM-K30A*	30mm	
IST-11WM-K20*	20mm		IST-11WM-K32A*	32mm	

* Torque value needs to be corrected for these heads

BOX END HEAD (optional)

Code	Open size	Applicable wrenches
IST-11WM-M8	8mm	IST-WPE10 IST-WPE20 IST-WPE30 IST-WPE60 IST-WPE100
IST-11WM-M10	10mm	
IST-11WM-M13	13mm	
IST-11WM-M14	14mm	
IST-11WM-M15	15mm	
IST-11WM-M17	17mm	
IST-11WM-M19	19mm	IST-WPE200 IST-WPE300 IST-WPE400
IST-11WM-M13A	13mm	
IST-11WM-M14A	14mm	
IST-11WM-M15A	15mm	
IST-11WM-M17A	17mm	
IST-11WM-M19A	19mm	
IST-11WM-M22A	22mm	
IST-11WM-M24A	24mm	
IST-11WM-M27A*	27mm	
IST-11WM-M30A*	30mm	
IST-11WM-M32A*	32mm	

torque correction



STANDARD DELIVERY

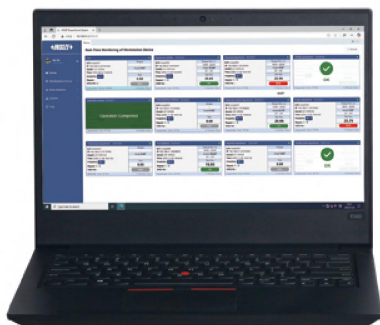
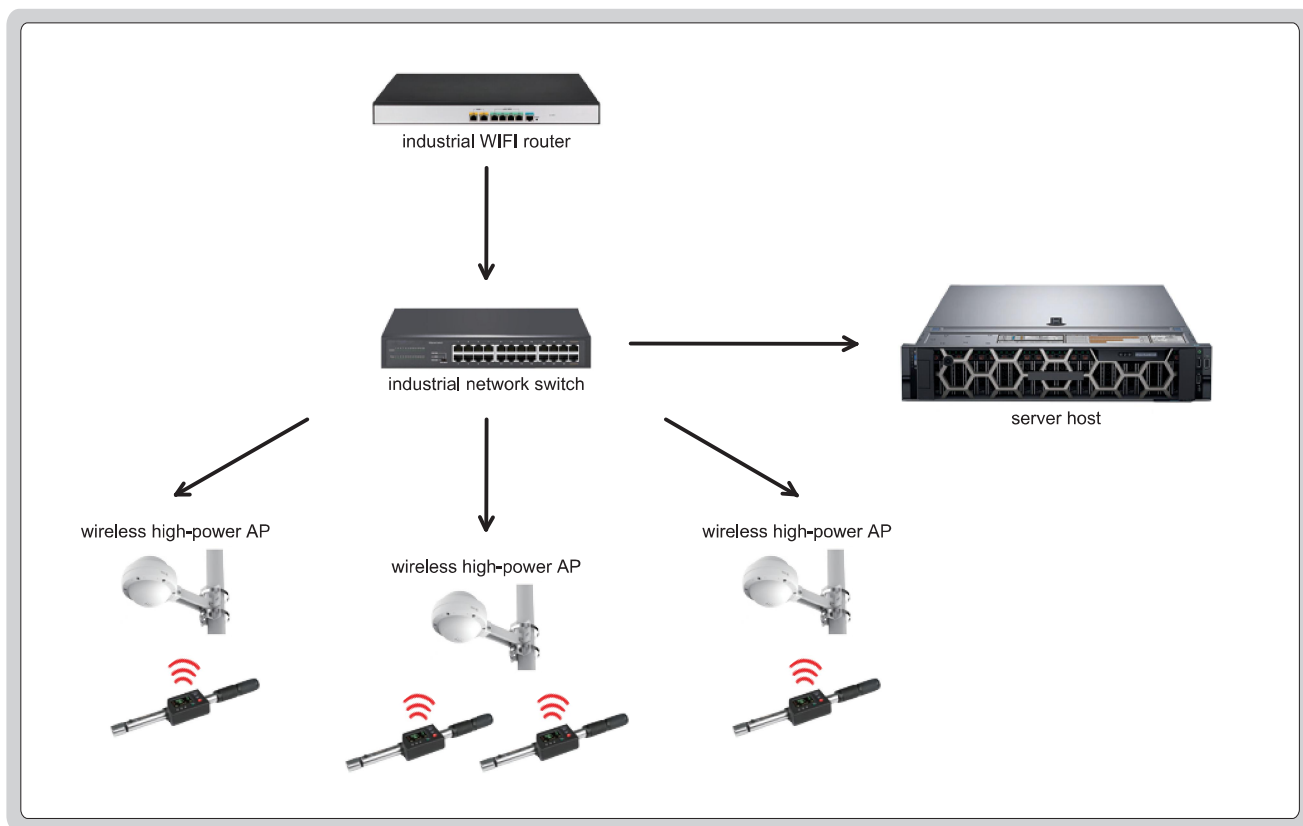
Digital torque wrench	1 pc
Ratchet head	1 pc
Torque adjustment tool	1 pc
Type-C transmission cable	1 pc
Centralized control center software	1 set
Rechargeable lithium battery	2 pc
Lithium battery charger	1 pc

OPTIONAL ACCESSORY

Non-standard wrench heads	customized according to customer requirements
Web framework extension software system	IST-WPE-TS (details refer to next page)

Web framework extension software system (optional)

- Sample framework for usage (all hardware devices are not included)



backend administration console
example: access 192.168.31.2: 9005
server host IPv4 address



operator console
example: access 192.168.31.2: 8080
server host IPv4 address

■ Server configuration requirements:

Quad-core/octa-core CPU or above;
32GB/64GB RAM or higher;
500GB/1TB hard drive (SSD) or larger;
Linux CentOS 7/CentOS 8 or mainstream server Linux operating system

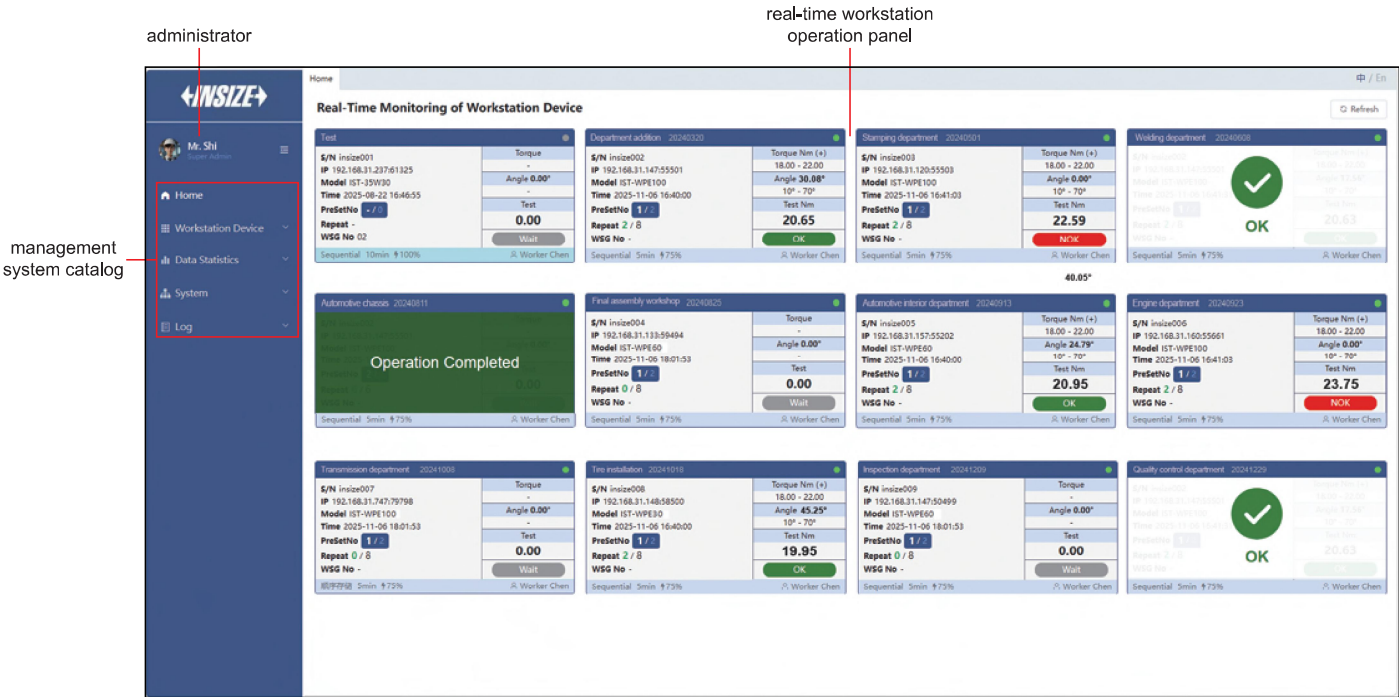
■ Network requirements:

WIFI 2.4G/5G wireless network;
Devices are segmented into separate VLAN;
Workstation network and server network are connected normally;
WIFI network signal remains strong, with an average signal strength greater than -65dBm;
Properly deploy industrial wireless high-power access points to ensure seamless signal coverage

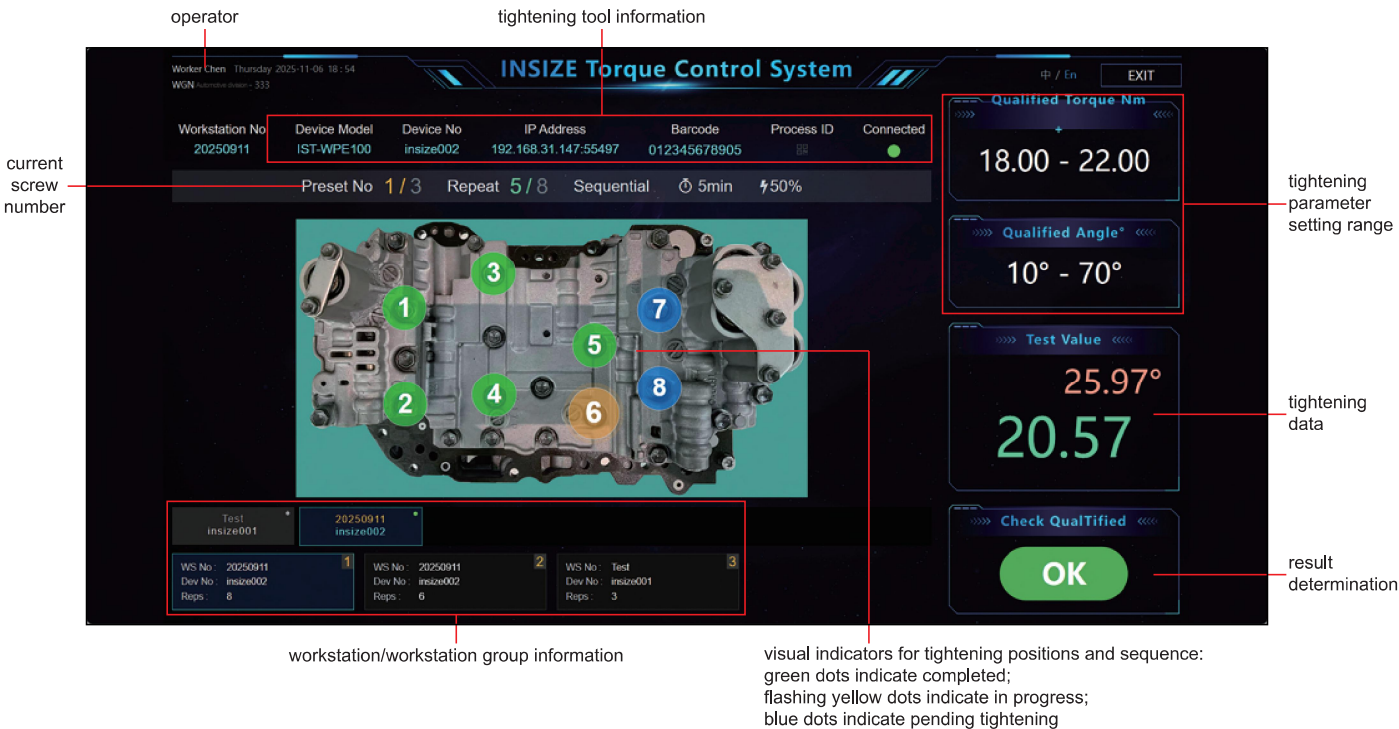


server console
(install all software programs required for operation)

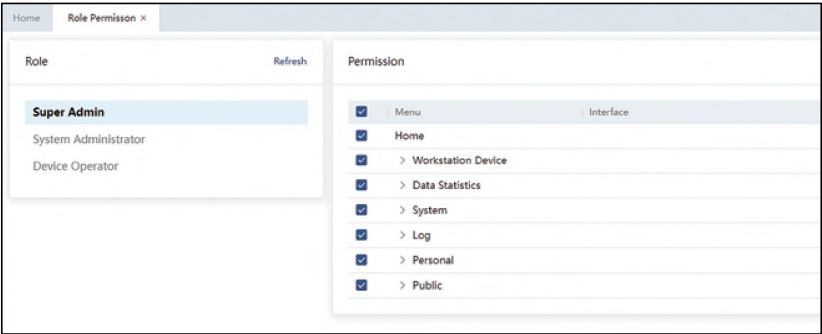
- Backend administration console: Provides an advanced management interface that not only delivers all functions of control center software but also enables comprehensive workstation configuration and permission management, and allows for more flexible assignment of torque tools and operator tasks



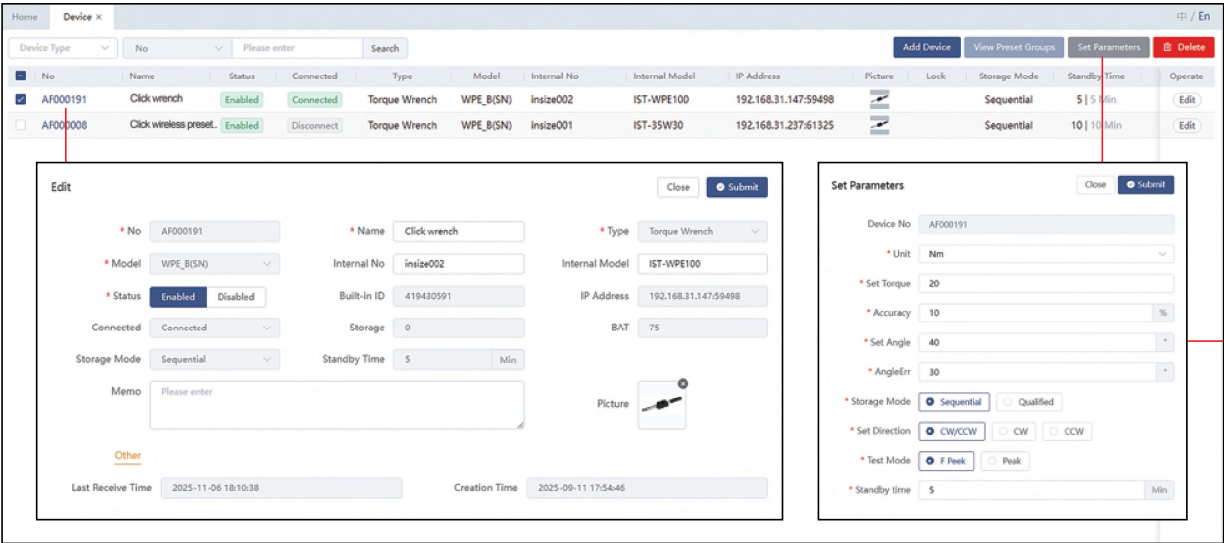
- Operator console: Provides operators with an intuitive panel, enabling them to quickly access task information, scan codes, receive pass notifications, etc. and complete work tasks with high quality



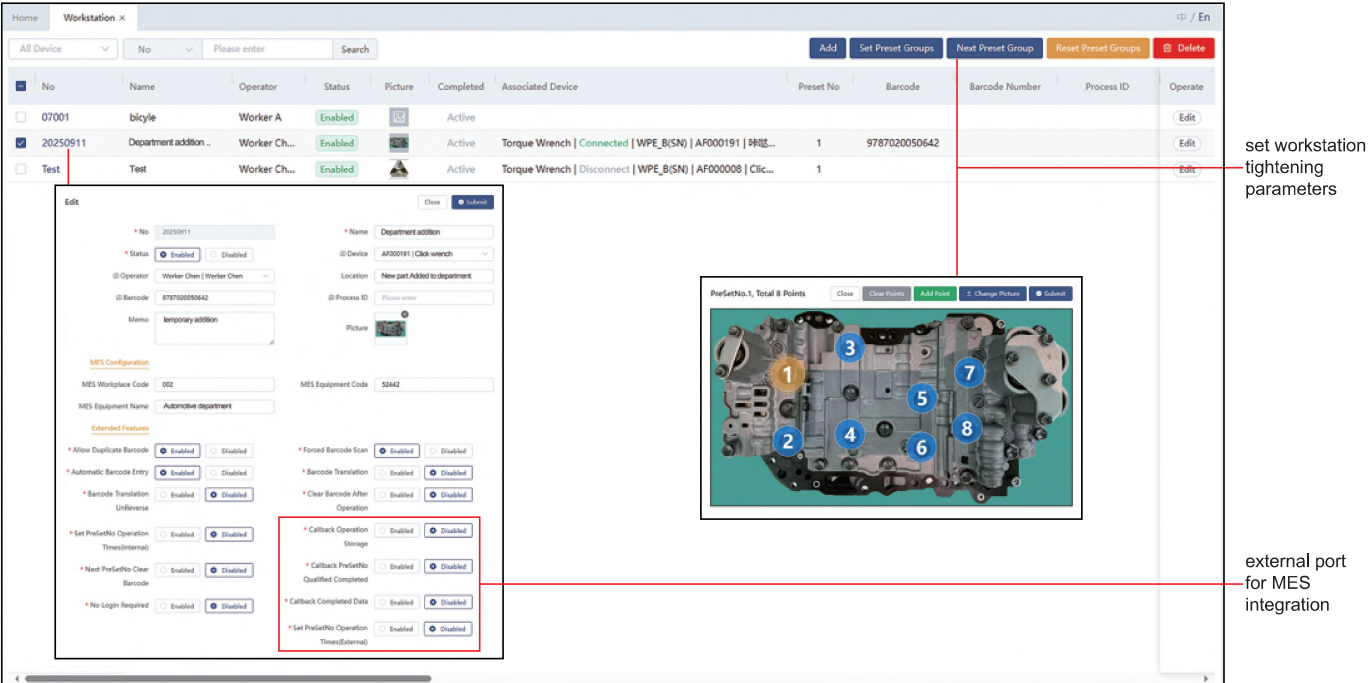
- Permission-based management (set accounts and passwords for login permission management):
Super admins possess all system permissions;
System administrators possess most workstation management permissions;
Device operators only have the permissions for operator console and to view their own operational data



- Device management: Centralized management of torque wrenches for workstation access



- Workstation management: Suitable for workstation using a single tightening tool for operation



-
- The screenshot displays the 'Workstation Group' management interface in an MES system. At the top, there's a navigation bar with 'Home' and 'Workstation Group x'. Below this is a search bar and a table of workstation groups. The table has columns: No, Name, Status, Operator, Completed, Associated Workstation Device, Current Preset No, MES Workplace Code, MES Equipment Code, MES Equipment, and Operate. A row is highlighted with No. 333, Name 'Automotive division', Status 'Enabled', and Operator 'Worker Chen...'. Below the table, two modal windows are shown. The left modal, titled 'Edit', contains fields for 'Basic' information: No (333), Name (Automotive division), Status (Enabled/Disabled), Operator (Worker Chen | Worker Chen), and Memo. It also has a 'MES Configuration' section with fields for MES Workplace Code, MES Equipment Code, MES Equipment Name, and MES Barcode. The right modal, also titled 'Edit', shows 'Associated Device by Workstation Group' with a table of devices. The table has columns: No, Name, Associated Device. It lists three devices: 20250911 (Department addition No, Torque Wrench | Connected | WPE_B(SN) | AF0001), Test (Test, Torque Wrench | Disconnect | WPE_B(SN) | AF0000), and another Test device. Red lines connect the highlighted row in the table to the 'Edit' modals, indicating the data flow and relationship between the table and the detailed views.
- | No | Name | Status | Operator | Completed | Associated Workstation Device | Current Preset No | MES Workplace Code | MES Equipment Code | MES Equipment | Operate |
|-----|---------------------|---------|----------------|-----------|---|-------------------|--------------------|--------------------|---------------|---------|
| 333 | Automotive division | Enabled | Worker Chen... | Active | Torque Wrench 20250911 Connected WPE_B(SN) AF000191 click wrenchu
Torque Wrench Test Disconnect WPE_B(SN) AF000008 click wrenchu | 1 | | | | Edit |
- Workstation Group Basic Information (Left Modal):**
- Basic: Workstation Details
 - No: 333
 - Name: Automotive division
 - Status: ☒ Enabled ☐ Disabled
 - @Operator: Worker Chen | Worker Chen
 - Memo: Please enter
 - MES Configuration:
 - MES Workplace Code: Please enter
 - MES Equipment Code: Please enter
 - MES Equipment Name: Please enter
 - MES Barcode: Please enter
- Associated Device by Workstation Group (Right Modal):**
- Basic: Workstation Details
 - Refresh
 - Join Remove

No	Name	Associated Device
20250911	Department addition No	Torque Wrench Connected WPE_B(SN) AF0001
Test	Test	Torque Wrench Disconnect WPE_B(SN) AF0000

 - Total 2
- workstation group basic information
- associated device by workstation group

- search criteria for data retrieval
- data export
- tightening curve